

MANGO



Classic®

ALL-IN-ONE ROUTE ACCOUNTING SOFTWARE SOLUTION

Mango was designed to automate office operations and make field data collection easier through the use of powerful desktop software and handheld devices. Mango enables you to:

- ✔ Eliminate in-office data entry
- ✔ Integrate handhelds
- ✔ Minimize repetitive work
- ✔ Reduce paperwork
- ✔ Use quantity discount pricing
- ✔ Manage your warehouse

Mango Classic is a forward-thinking solution that grows with your organization. Built specifically for delivery companies, this software keeps track of customers, inventory, and your route scheduling.

- Keep critical information in one place, such as customer data, sales tax, product and equipment information, and more.
- Generate comprehensive reports that cover every aspect of your business – from aging analysis to inventory.
- Maintain more control over your data – administrators can view what changes have been made and by whom.

IMPROVED COMMUNICATION

Improved Communication Stay in constant contact with your customers using the Mango Customer Message Centre. This function allows you to send statements, invoice copies, and reminders through email, fax, or SMS. Your invoices will be stored digitally, along with the customer's signature, for easy retrieval.

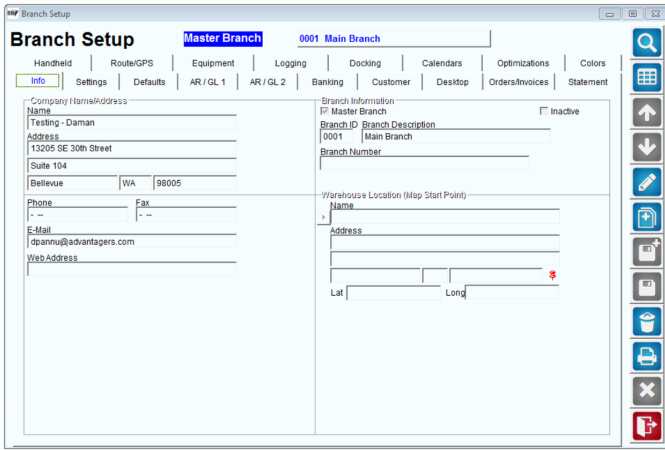
INTEGRATED HANDHELD DEVICES

Our line of ruggedized handheld devices link directly to the desktop for easy data transfer, reducing costly manual data input while collecting accurate data while on route.

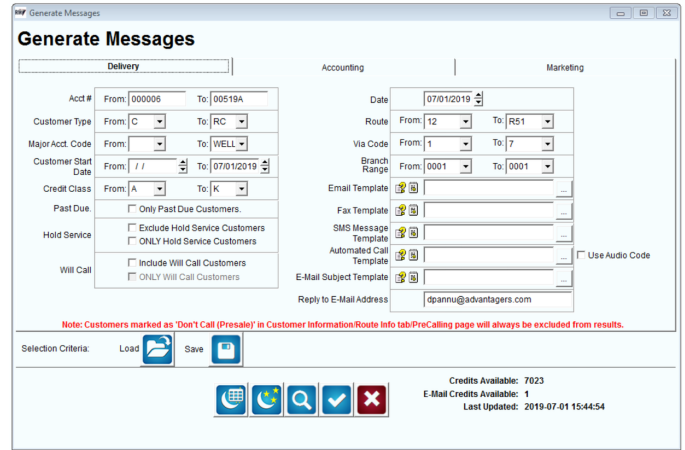
RELIABLE 24/7 SUPPORT

You can always call our world class support staff 24/7. No matter what time of day, someone will be there to help.

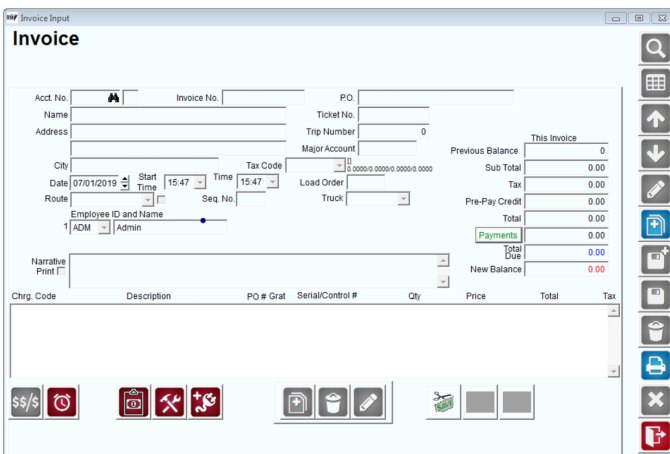




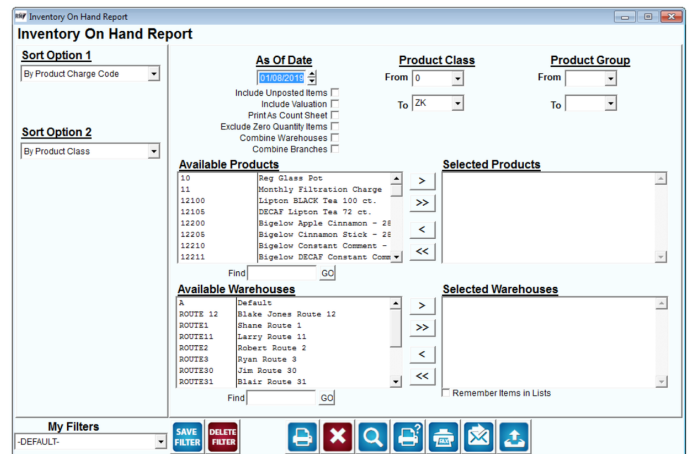
Run Branches Separately, From One Software - If your company has multiple locations, you will be able to manage each branch location separately, while conveniently storing and managing all of your information in one database. This allows you to create remote offices across the entire company, but manage them independently from each other for more accurate reporting. User permission levels can be set to manage who has access to which branch within the system.



Streamline Communication with Customers - The Customer Message Centre is a powerful tool that lets you communicate with your customers more effectively. It allows you to send important messages in a number of different formats, including Voice, SMS, Fax, and Email. This module is built in to every Mango system, and it uses a web-based service so you will not need any additional hardware. It is perfect if you have your Mango hosted on one of our cloud servers.



Create Invoices Faster - Most of your invoice data will be completed directly on your driver's handheld. This saves time on manually entering invoices, and allows your drivers to digitally upload the information.



View Inventory on Hand - Manage inventory more effectively with up-to-date reports on your inventory levels. At any given time, a list of products can be generated in order to determine your inventory on hand.

SYSTEM REQUIREMENTS

- Windows-based Desktop PC (Windows 7 or later)
- Wireless network for Wi-Fi for Android, recommended for all DVD Burner for Backing Up High Speed Internet - DSL, Cable, T1, etc.
- 10 GB Hard Disk Free Space 512MB of RAM (Minimum) Pentium 3 Processor, 2.0 GHz (Minimum)*
- ARS highly recommends that all workstations operate on Windows 7 Professional Edition or later and Multi-User environments (2 or more users) implement a Windows Server system (Minimum of Windows 2003 Server Edition, Windows Server 2008 or later is recommended).
- Handheld Pocket PC operating system - Windows Mobile 5.0 or newer Android 4.1.2 or newer operating system
- Units from: Mango X-Series, Android Mobile Phones and Tablets, Advantage M3, Pharos, Symbol, HP (Infrared Port Only), and many others. Optional Printer: 2", 3" or 4". (For inquires about hardware, paper and other accessories please visit www.AdvantageRoute.com/shop/)

WWW.ADVANTAGEROUTE.COM/ROUTE-ACCOUNTING-SOFTWARE

WHO IS ARS? Advantage Route Systems is the global leader in route automation solutions, trusted by thousands of route delivery companies worldwide to deliver progressive solutions for route accounting, handheld devices, and GPS-based technologies. ARS products have become an essential part of in-field and office operations in industries such as bottled water, water treatment, ice, propane, oil recycling, coffee, and more. Built on a commitment to help our customers' businesses run optimally, we provide 24/7 world-class support that is second to none.