

SPEED UP YOUR INVOICING AND PAYMENT PROCESSES

What are the benefits of EDI?

- ✔ Reduce the volume of paperwork
- ✔ Increase efficiency in the invoicing process
- ✔ Reduce input time, speeding up the payment process, and reducing data entry errors
- ✔ Gain higher productivity and an improved production cycle

The main function of Mango EDI is to reduce your volume of paperwork and increase efficiency in the invoicing process. EDI reduces input time and data entry errors, while speeding up the payment process.

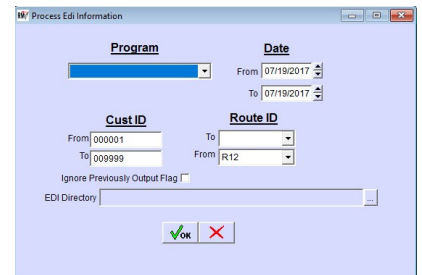
- Format Route Manager transaction data to easily transfer payment and invoicing data electronically to a third party
- Streamline document transfer between customers and partners by quickly converting data into compatible formats
- Reduce input time to improve your production cycle and increase efficiency

WHAT IS EDI?

Mango EDI is the structured transmission of data between organizations. It is used to transfer electronic documents or business data from one computer system to another through a standardized language that is common to all participating partners. In addition to establishing uniform formats, standards also provide security and control for transaction sets. For example, organizations might replace a bill of lading with an appropriate Mango EDI formatted message.

HOW DOES IT WORK?

By creating and customizing a series of formatted Mango EDI Output Codes and assigning them to each customer account, the system will create formatted Mango EDI transaction files that are compatible with your client's systems, and export them into a predefined directory. The files will then be transmitted to your customers via Email, HTTP, or FTP transfer.



When you and your customers are on the same page you can expect to have a better relationship and stay one step ahead of your competitors.

LEARN MORE AT WWW.ADVANTAGEROUTE.COM/ELECTRONIC-DOCUMENTS

WHO IS ARS? Advantage Route Systems is the global leader in route automation solutions, trusted by thousands of route delivery companies worldwide to deliver progressive solutions for route accounting, handheld devices, and GPS-based technologies. ARS products have become an essential part of in-field and office operations in industries such as bottled water, water treatment, ice, propane, oil recycling, coffee, and more. Built on a commitment to help our customers' businesses run optimally, we provide 24/7 world-class support that is second to none.